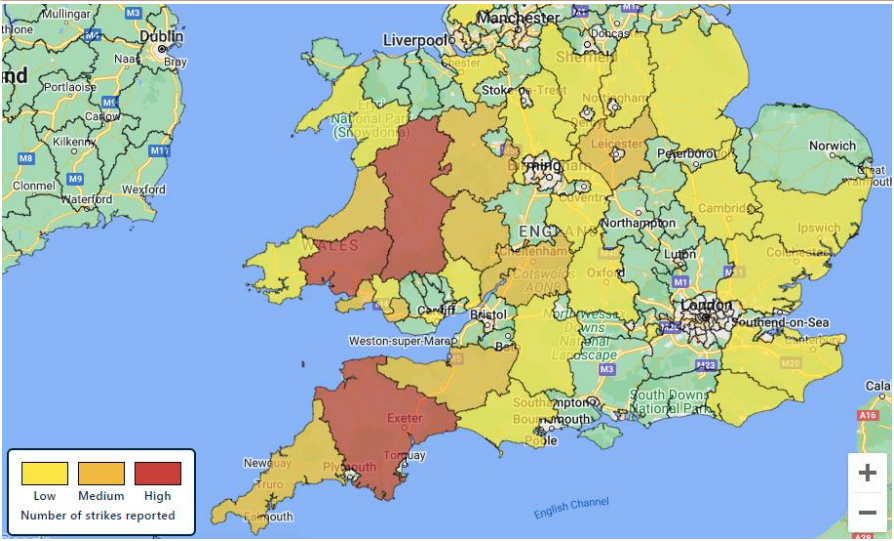


## June 2024

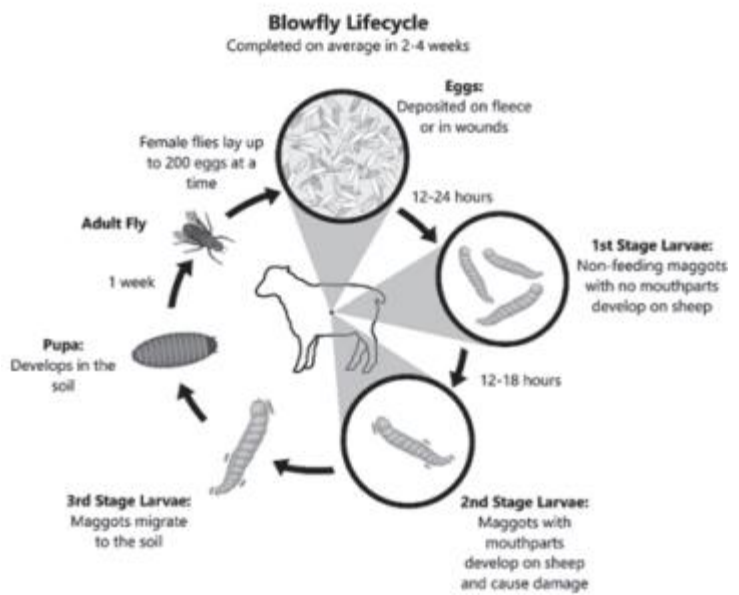
When it comes to blowfly strike, prevention is always better than cure! Dirty back ends, foot rot lesions, open wounds and carcasses on farm are all attractive egg laying sites for flies. Maggots can appear as soon as 12 hours after the first eggs being laid. The wet weather may have delayed your usual preventative treatments, and this is a reminder to act as soon as possible, to reduce the chance of problems developing this season! NADIS (in conjunction with *Elanco*) have compiled some good advice which we have added to below:

The NADIS blowfly forecast suggests that weather conditions in your area mean that local flocks are at **RISK** of blowfly strike caused by female flies being active and laying eggs



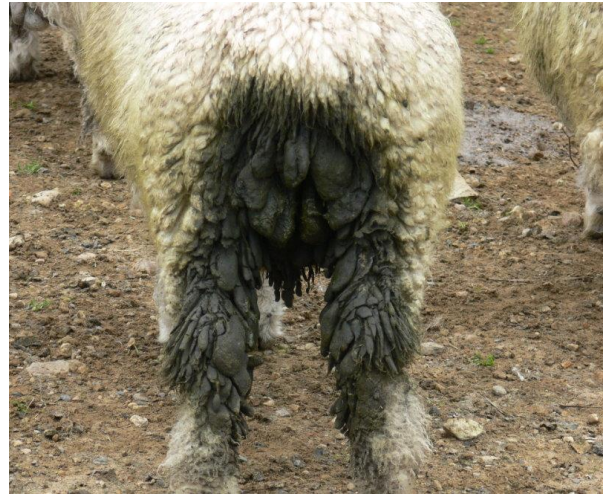
## Ways to reduce the risk of fly strike on your farm

- Manage the fly population: Reducing the fly population early in the year has the greatest impact on the challenge to your clients' flocks for the grazing season. **Flies can lay up to 3000 eggs in a 3-month period, so populations increase quickly.**
  - Inexpensive fly traps have been shown to reduce strike incidence by 80% in a season.
  - Consider how muck heaps are sited and managed.
  - Prompt disposal of deadstock.
- Reduce fleece contamination
  - Minimise scour due to worms

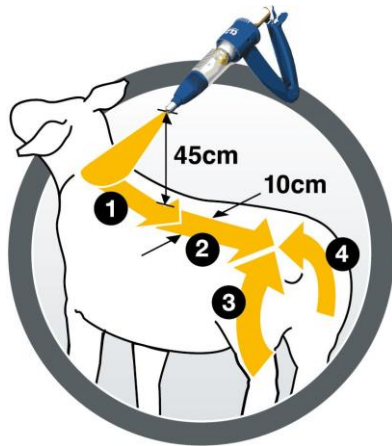


– Nematodirus infection is particularly important early in the season. Discuss roundworm control with your client as part of an integrated parasite control plan.

- Dagging or crutching to remove soiled fleece from around the back end
- Apply preventative treatments in advance of the high-risk period
  - Make sure you use the correct product and apply it according to datasheet advice.



### Preventative Treatments



If a preventative treatment has not yet been applied, we would encourage its use as the risk level is currently increasing.

- Use of the most appropriate product, based on labour resources, age of the lambs during the risk period, withdrawal periods and anticipated slaughter dates.
- Please contact us for further guidance if you are unsure what might work for your stock this year
- Shearing in the weeks following application will reduce the effectiveness of the product, as will

incorrect application. Take the time to apply the adequate quantity, over the correct area

Insect Growth Regulators are targeted and relatively narrow spectrum. Therefore, they are the gold standard in blowfly prevention.

Group	Active	Application	Treating Strike?	Preventing Strike?
IGR (insect growth regulator)	Dicyclanil	Pour on	No	Yes 8 wks, 16 wks, 19 wks
OP (organophosphate)	Diazinon	Plunge dip	Yes	Yes
SP (synthetic pyrethroid)	Cypermethrin alphacypermethrin deltamethrin	Pour on	Yes Yes Yes	Yes 6-8 wks Yes 8-10 wks No

## Thinking about worming your lambs?

**Now is a great time to sign up to the Animal Health and Welfare Pathway and get a free worm egg count.....**



The pathway is a great opportunity to have up to **3 hours government funded time with a vet**, to discuss any sheep related topics of your choice, and a **free worm egg count**. We are now also able to complete your annual **Flock Health Plan** as part of the pathway.

### **The requirements:**

- Own a minimum of 21 sheep
- To perform a pre-treatment worm egg count (WEC) - We can come and take the samples as part of your pathway or provide the kit
- If worming is necessary, a post-treatment sample is required
- Complete the process within 6 months of signing up

### **What you get?**

1 - 2 farm visits

2 - 3 hours of time, to include a WEC and discussion

### **Any remaining time can be tailored to your system, for example:**

Blood sampling e.g. mineral / infectious diseases (lab fees/equipment will be charged)

Annual Flock Health Plan

Medicine assessment review (annual requirement)

Veterinary Attestation Number (VAN) now required for animals entering the food chain from non-red tractor farms

## What do I need to do?

It takes literally a few minutes to sign up, follow this link:

<https://apply-for-an-annual-health-and-welfare-review.defra.gov.uk/apply/start>

After applying, contact the surgery and supply us with your unique Agreement Code and SBI number.

Once we have these details, we will arrange for a vet to discuss how you wish to proceed with the visit(s) and faecal testing – now is a great time to get on board to cover the parasite season!

Please note – if you have sheep *and* beef, you can currently only apply for one pathway, so select which would be most favourable for your system.

## How do I claim?

Once the visit(s) have been completed, you will receive a report and signed form from your designated vet, which are required for you to make the claim with

<https://apply-for-an-annual-health-and-welfare-review.defra.gov.uk/claim>

Sheep applicants will receive a fixed payment of £436.00, the sum of which will be invoiced for by Castle Vets to cover the costs of the pathway. You are not expected to make any payments before receiving your pathway grant.

If you have any questions, or want to apply for a different animal group (Dairy/Beef/Pigs), please do not hesitate to contact us.

## Red Tractor Inspection Looming?

Now we can help with a free health plan review and all the associated paperwork you need from your vet. If you sign up to the beef review, we can do FREE BVD testing which is new red tractor requirement.

All you have to do is sign up for the SFI Animal health and Welfare Review. It's easy, here is the link:



<https://apply-for-an-annual-health-and-welfare-review.defra.gov.uk/apply/start>

Once you have your agreement number let us know and we will arrange the necessary work to be done at a mutually convenient time.

We can also have a deep dive into areas that you might want advice on and help support future grant applications where vet support will strengthen your case.

We have had 100 farmers sign up to this FREE service and its open to anyone with the minimum stock numbers of

- 11 or more beef cattle
- 11 or more dairy cattle
- 21 or more sheep
- 51 or more pigs

## Upcoming Meetings:

### Final Red Tractor Medicines Course

Having run many Red Tractor Courses since 2018, Castle Vets will be completing this final training session for anyone who is still in need of the certification. Red Tractor currently has no limit on re-validation (i.e. the certificate has no end date), so if you don't have anyone on your farm with this qualification, we urge you to book on!

After this date, online training will be available through third parties, or one of our vets will be able to come out to your farm to deliver the training one-on-one, at additional cost.

August 1<sup>st</sup>, 10am at the Launceston Practice, Pennygillam Way  
Cost: £62 ex VAT

Pasties will of course be provided, along with a helpful box of tricks for medicine administration!



TRACEABLE, SAFE  
&  
FARMED WITH CARE

### National Youngstock Conference @ Exeter Chiefs

Use this link to get £5 off your ticket(s) to the third annual youngstock conference, courtesy of the producers of *Fencovis* calf scour vaccine:

<https://www.eventbrite.co.uk/e/national-youngstock-conference-2024-tickets-775458797137?discount=CalfmattersNYC24>

**When?** 18<sup>th</sup> July **Discount code:** CalfmattersNYC24





## Dung Beetle Conference

Many speakers, **including our own vet Tim**, are presenting on the benefits of bio-diverse farming at this two-day conference in Bristol. Learn about the effect of wormers on dung beetle populations (particularly throughout Dartmoor) and making agro-ecology work for you!

**Where?** Yeo Valley Holt Farm, Bristol

**When?** 11<sup>th</sup> and 12<sup>th</sup> of June (tickets to one or both days)

**Further details:**

<https://farmcarbontoolkit.org.uk/event/the-dung-beetle-conference-2024/>

## Your account with us

Would you like to pay your account by **direct debit**? There are a number of benefits including the common medicines, tubes & vaccines in full bottles that are considerably cheaper for cash sale accounts can be booked to your main account if you pay by direct debit so **you will no longer need to pay within 3 days of collection**. Please be aware this is not every medicine just the common ones.

You do not have to physically make the payment, we send you your statement with the payment date & amount stamped on it. **You then have 5 days to notify us of any query**. All being well we take the agreed payment.

If you have a **cash sale account** & want to continue with this rather than opting for a direct debit account there have been a few changes made to enable us to be as competitive as possible in an everchanging industry whilst still providing a professional, efficient & personal service.

The best possible prices will be available on the most common medicines, tubes & vaccines for whole bottles only. The cash sale terms are **strictly payable 3 days from date of invoice** (usually when meds are ordered). If payment is not received the items will be transferred to your main account resulting in the loss of the discount.

Please check when ordering meds if they come under the new cash sale pricing structure.

Finally with the postal service being a little bit unreliable & a number of clients not receiving their accounts once posted we are quite happy to **email your monthly account**. If this is something you wish to do from now on please email us at [accounts@castlevets.org](mailto:accounts@castlevets.org) with the name and address of the account and the email address you would like us to send the

statement to or ring us on the normal number (01566 772371) and ask to speak to someone in accounts.

